

DISCOVER@SHDL

E-ISSN 2289-1137

"Siti Hasmah Digital Library Quarterly Bulletin"



Volume 3, Issue 1

AUG 2014



INSIDE

| | |
|-----------------------------------|----|
| FROM THE CHIEF LIBRARIAN | 2 |
| NEWS@SHDL | 3 |
| *LIBRARY DEVELOPMENT: LAW LIBRARY | |
| NEW BOOKS@SHDL | 4 |
| *REVIEW | |
| *GIFT | |
| MEDIA/AV@SHDL | 7 |
| *REVIEW | |
| THESES RECEIVING REPORT | 9 |
| SERIALS / DATABASE HIGHLIGHTS | 15 |
| A LIBRARY HOW-TO | 19 |
| * E JOURNAL A TO Z | |
| ARTICLE | 26 |
| * OPEN ACCESS JOURNAL | |
| SCHEDULE | 27 |
| *DATABASE TRAINING | |
| LIBRARY ICSI 2012 FEEDBACK | 28 |
| FAQ LIBRARY | 29 |



GREEN LIBRARY

Although the wealth of literature on how academic libraries, contribute to sustainability, the phrase "green library" colloquially refers to a library building that is certified as an environmentally friendly building. This trend implies that a green building is a

necessary qualification for a library to be considered a "green library." According to the Association for the Advancement of Sustainability in Higher Education (AASHE), as of 2013, there are thirteen LEED certified academic libraries in the United States (AASHE, 2013), a U.S. Green Building Council (USGBC) certification that stands for Leadership in Energy and Environmental Design.

What is a Green Building?

Under the US Green Building Council's LEED performance system, a green building is one that is built incorporating the following design elements:

- ◆ Sustainable site selection and development
- ◆ Water conservation and energy efficiency
- ◆ Local resources, material conservation and waste reduction
- ◆ Indoor environmental quality
- ◆ Innovation in design
- ◆ Builders choose those items that are appropriate for their project.

Why Build Green Libraries?

There are several reasons why libraries would want to build green or incorporate green features into their buildings.

- ◆ The cost of constructing green buildings has become affordable.
- ◆ Most readily available energy resources are finite resources.
- ◆ it is important that we reduce the carbon footprint of our buildings.

Instead of developing new "green" building, renovating an existing **library** building is an option which could even lead to LEED certification under the LEED for Existing Buildings (LEED-EB) option. But for budget strapped **libraries** in these tough economic times, even renovating may not be a possibility.

Your quarterly guide to news, services and programs at Siti Hasmah Digital Library.

Editor

Editorial Team

Design & Layout

Mr Shaharom Nizam Mohamed

Article Contributor

SHDL Team

How to Contact Us

Newsletter Editor

Siti Hasmah Digital Library,

Multimedia University Cyberjaya.

Jalan Multimedia, 63100 Cyberjaya, Selangor, Malaysia.

Email: libdesk@mmu.edu.my

We Want to Hear From You

Siti Hasmah Digital Library welcomes suggestions and comments on the programs and services we provide. Contact us online through 'libdesk@mmu.edu.my' or phone 603 83125852 (Cyberjaya) & 606 2523493 (Melaka)

The contents of this publication may be reproduced without consent.

Volume 2, Issue 1

FB Page: <http://www.facebook.com/pages/Siti-Hasmah-Digital-Library/99994568298>



SHDL

Siti Hasmah Digital Library

***“WORKSHOP ON HOW TO WRITE A GREAT RESEARCH PAPER,
AND GET IT ACCEPTED BY A GOOD JOURNAL”***



In collaboration with Elsevier Publishing Company, Siti Hasmah Digital Library has conducted a workshop for authors entitled ***"How to Write a Great Research Paper, and Get it Accepted by a Good Journal"*** on 29 August 2014.

It was SHDL's second collaboration with Elsevier to conduct such workshop for MMU community and it was take place at FOM Lecture Hall, Cyberjaya. There are two speakers involved which are Dr. Teng – Broug, Velerie M. and Ms. Elise Shen.

The objective of the program is to give participants a better understanding of writing research papers based on several aspect including article writing as well as publishing. In addition, the speaker also covers useful research tool such as SCOPUS and MENDELEY.

On this day, SHDL was able to attract around 138 participants consists of academicians, postgraduate students and researchers. The program was started at 2.30 pm and the opening address was given by the Vice President of Academic, Prof. Dr. Ahmad Rafi Mohamed Eshaq. Siti Hasmah Digital Library would like to say thank you to all participants and those who involved, to ensure the event was successful.

***“VISIT TO UNIVERSITY SAINS MALAYSIA, KAMPUS
KEJURUTERAAN”***



Pulau Pinang, August 12 – A visit to Universiti Sains Malaysia, Kampus Kejuruteraan was held. The aim is to get more updates, sharing experiences and knowledge on open source system that has been implemented at the campus. From the session, it is informed that the campus has been using Koha library system and EPrint for their library management and repository system respectively.

There are lot of valuable information was shared during this visit and it has opened a new perspective to open source system that has been widely accepted around the world, especially in library environment. We would like to say thank you to En Ali Abd. Rahim and his staffs for the warm welcome and hospitality. Perhaps, this visit can help and encourages MMU librarians to implement open source systems for SHDL in the future.

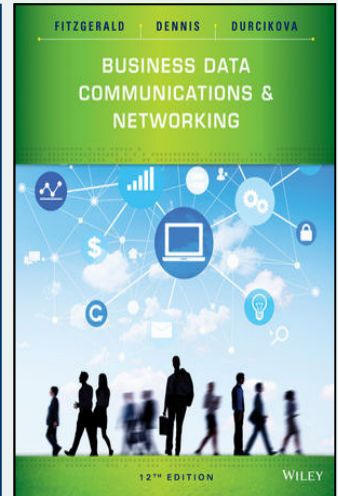
NEW BOOKS@SHDL

Review:

Updated with the latest advances in the field, Jerry FitzGerald, Alan Dennis, and Alexandra Durcikova's 12th Edition of Business Data Communications and Networking, continues to provide the fundamental concepts and cutting-edge coverage of applications that students need to succeed in their careers.

Authors FitzGerald, Dennis, and Durcikova have developed a foundation and balanced presentation from which new technologies and applications can be easily understood, evaluated, and compared.

-John Wiley & Sons-



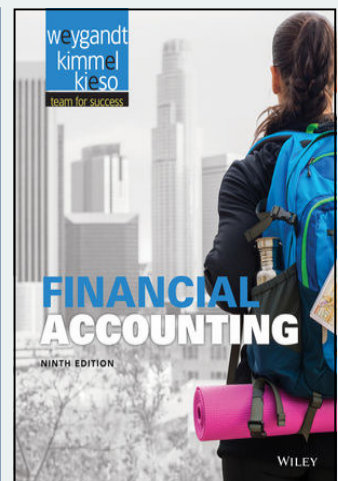
Author: Jerry FitzGerald, Alan Dennis and Alexandra Durcikova
ISBN: 9781118891681
Call No.: TK5105.F58
2015
Year: 2015

Review:

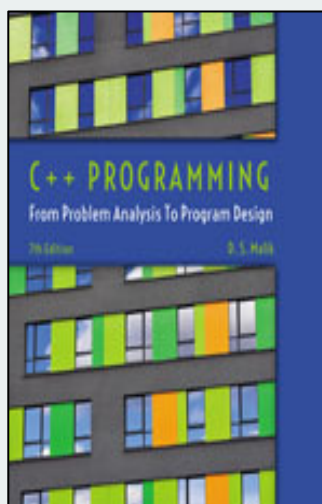
The Team for Success is focused on helping millennial students get the most out of their accounting courses in the digital age, and on helping instructors deliver the most effective courses whether face-to-face, hybrid, or online with model course plans designed for easy and effective implementation

Financial Accounting with WileyPLUS by Weygandt, Kimmel, Kieso provides students with a clear and comprehensive introduction to financial accounting that begins with the building blocks of the accounting cycle.

-John Wiley & Sons-



Author: Jerry J. Weygandt, Donald E. Kieso, Paul D. Kimmel
ISBN: 9781118334324
Call No.: HF5636.W49
2014
Year: 2014

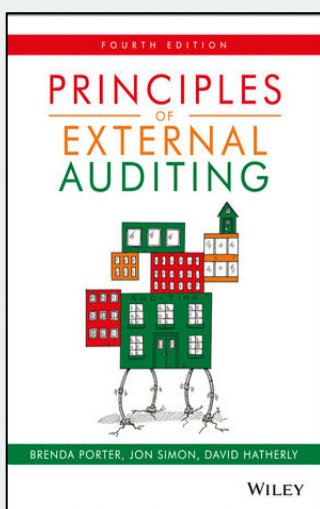


Author: D. S. Malik
ISBN: 9781285852744
Call No.:
QA76.73.C153 M35
2015
Year: 2015

Review:

C++ PROGRAMMING: FROM PROBLEM ANALYSIS TO PROGRAM DESIGN, Seventh Edition remains the definitive text for a first programming language course. D.S. Malik's time-tested, student-centered methodology uses a strong focus on problem-solving and full-code examples to vividly demonstrate the how and why of applying programming concepts and utilizing C++ to work through a problem. This new edition includes updated end-of-chapter exercises, new debugging exercises, an earlier introduction to variables and a streamlined discussion of user-defined functions to best meet the needs of the modern CS1 course. An optional CourseMate brings C++ PROGRAMMING: FROM PROBLEM ANALYSIS TO PROGRAM DESIGN to life with interactive study tools including videos, quizzing, flashcards, and games. The CourseMate's digital Lab Manual offers additional hands-on exercises, allowing students to reinforce critical thinking through practice.

-CENGAGE Learning-



Author: Brenda Porter, Jon Simon, David Hatherly
ISBN: 9780470974452
Call No.: HF5667.P67
2014
Year: 2014

Review:

Principles of External Auditing has become established as one of the leading textbooks for students studying auditing. Striking a careful balance between theory and practice, the book describes and explains, in non-technical language, the nature of the audit function and the principles of the audit process.

The book covers international auditing and accounting standards and relevant statute and case law. It explains the fundamental concepts of auditing and takes the reader through the various stages of the audit process. It also discusses topical aspects of auditing such as legal liability, audit risk, quality control, and the impact of information technology.

Brenda Porter is currently visiting Professor at Exeter University and Chulalongkorn University, Bangkok.

-John Wiley & Sons-

NEW BOOKS@SHDL: DONATION/GIFT

Name : KAMAL SUJAK

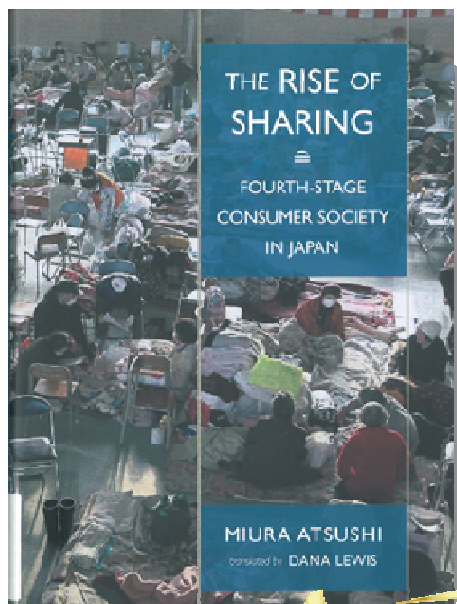
Title : Kumpulan Puisi: Segelas Kerikil

Author : Kamal Sujak

Publisher : Institut Terjemahan & Buku Malaysia Berhad

Where to find?

Open Collection / PL5136.K36 2014



Name : LTCB INTERNATIONAL LIBRARY & SUMITOMO MITSUI TRUST BANK LTD.

Title : The rise of sharing: fourth-stage consumer society in Japan

Author : Miura Atsushi; translated by Dana Lewis

Publisher : International House of Japan

Where to find?

Open Collection / HC465.C6 M58 2014



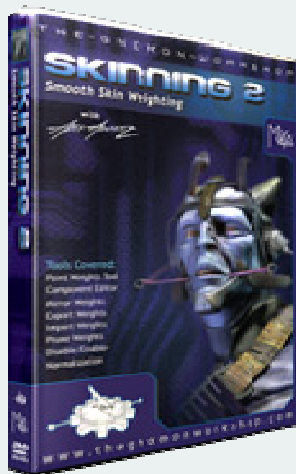
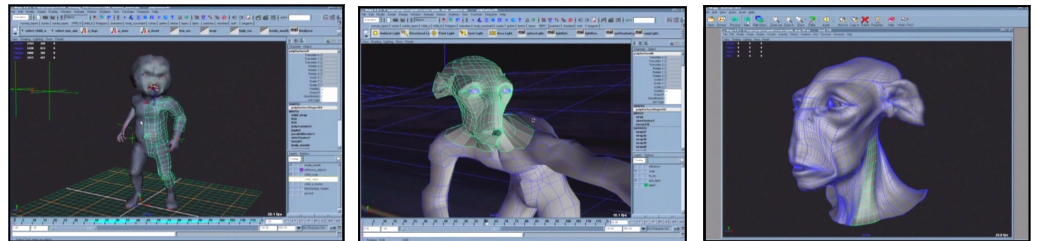
Call No: AV [DVD]
TR897.5.S55
Pub.: The Gnomon
Workshop
Location: Cyberjaya

Skining 1: Smooth Binding with Wrap Deformers

Maya offers many choices when it comes to how a character's geometry will be influenced by a skeleton. Smooth Bind allows for overlapping membership where any vertex can be influenced by the rotation of multiple joints - a conceptually naturalistic approach. Yet if the character's geometry is heavy, be it NURBS, Polygons or Sub-D, the weighting process can become cumbersome, and performance can suffer.

Topic Covered:

- Convert SubD to Poly
- Extract Faces
- Joint Tool
- SmoothBind
- Convert NURBS to Poly
- Wrap Deformers
- Script Editor



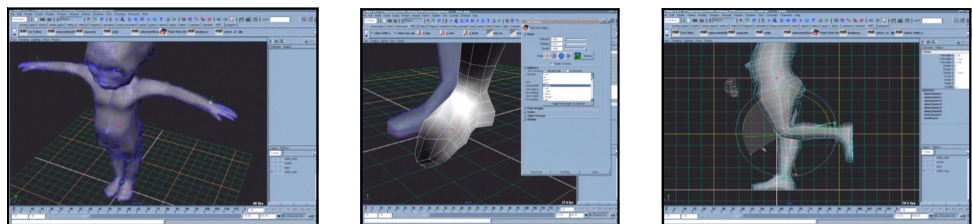
Call No: AV [DVD]
TR897.5.S55
Pub.: The Gnomon
Workshop
Location: Cyberjaya

Skining 2: Smooth Skin Weighting

Once geometry has been Smooth Bound to a skeleton, vertex weights must be edited to design the skin deformations. Maya's default weighting algorithms can give a good starting point, but the skin will be riddled with problems. Continuing from 'Skining, 1', we look at the workflow for effectively editing weights using Artisan and the Component Editor. Every major region of the body is addressed including the hand, foot, knee, pelvis, shoulder, abdomen and chest. While weighting, we also discuss what results one can hope to achieve with the goal of anatomical accuracy in mind: weighting alone can only take you so far, but it is the crucial first step.

Topic Covered:

- Paint Weights Tool
- Mirror Weights
- Prune Weights
- Component Editor
- Export/Import Weights
- Disable/Enable Normalization





How to use AV viewing room *(For students and SHDL users)*

- User request to use single/group viewing room from the library counter along with item details (title, call number, barcode). Request are based on first come, first serve.

(Eg: [VT] PN1995.9.T75 D54 1993)

- User hands in ID card to staff at counter and fill-in the Single/Group Viewing Room form. User ID card is held in the counter, while user in the room.
- User waits inside the viewing room while staff collects AV item(s) from the AV room (Max. 3 items per user). Maximum usage period for viewing room is 2 hours for per user; renewal usage period must be done at counter by filling new form.
- Viewing room is for viewing of AV collections purpose ONLY.
- User needs to go to circulation counter with the borrowed AV collection(s) once finished to get back their ID card.
- User's ID card will be returned upon staff final checking.

How to borrow AV items *(For MMU staff)*

- User requests for AV material from the counter with the item call number.
- User waits for staff to collect the item from the AV collection room. *(Refer library policy for staff's loan privilege).*
- Check-out item at counter using user's library account.

Any questions about media collection, please forward to **Mdm Norazilah Masro - norazilah.masro@mmu.edu.my ext. 3628 (Melaka)** or **Mdm Noor Azimah Nawawi - azimah.nawawi@mmu.edu.my ext. 5872 (Cyberjaya)**.



MMU Digital Theses are the platform for the Siti Hasmah Digital Library to keep Multimedia University intellectual research made by the postgraduate students. The MMU Digital Theses also aim to maximize the visibility and the availability of the MMU's theses as well as provides opportunities for further research.

Theses Collection for year 2014 (April – August) (last updated 8 September 2014) are:

Ali Afzalian Mand. (2013). *The application of adaptive neuro-fuzzy classifier using linguistic hedges in emotion recognition system*. (Master Thesis), Multimedia University (MMU), Malaysia.

Keyword: Algorithms (Computer science)
Call number: QA9.58 A45 2013

Ang, T. K. (2012). *Wavelet MACH filter for omnidirectional human action recognition*. (Master Thesis), Multimedia University (MMU), Malaysia.

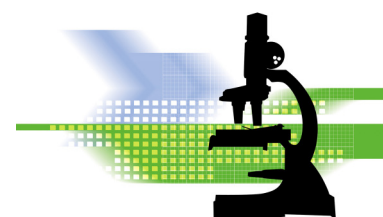
Keyword: Wavelets (Mathematics)
Call number: QA403.3 A54 2012

Auwwal Abbas. (2014). *Impact of social networking website on student's academic performance and self-esteem*. (MBA Thesis), Multimedia University (MMU), Malaysia.

Keyword: Mass media and youth
Call number: HQ799.2.M35 A89 2014

Azzalea Nowensha Shika Pertiwi. (2014). *Critical factors of knowledge sharing among students of private universities*. (MBA Thesis), Multimedia University (MMU), Malaysia.

Keyword: Knowledge management
Call number: HD30.2 A99 2014



Theses Receiving Report 2014 as at 8 September 2014

Chan, W. T. (2013). *Application of optical character recognition in the processing in the processing of thermal images*. (Master Thesis), Multimedia University (MMU), Malaysia.

Keyword: Infrared imaging. Thermal imaging.

Call number: TA1570 T43 2013

Chew, P. Y. (2012). *Processing and mechanical characterisation of copper alloy by powder metallurgy method*. (Master Thesis), Multimedia University (MMU), Malaysia.

Keyword: Powder metallurgy

Call number: TN695 P44 2012

Chiang, M. L. (2013). *Automatic facial expression analysis using face action units*. (Master Thesis), Multimedia University (MMU), Malaysia.

Keyword: Human face recognition (Computer science)

Call number: TA1650 C45 2013

Chin, Y. J. (2012). *Multiple hand based biometric bit extraction for template protection*. (Master Thesis), Multimedia University (MMU), Malaysia.

Keyword: Biometric identification

Call number: TK7882.B56 C45 2012

Dilgash Q. Mohamed Salih. (2014). *Leadership style and employees' creative behaviours in Malaysian Small Medium Enterprises*. (MBA Thesis), Multimedia University (MMU), Malaysia.

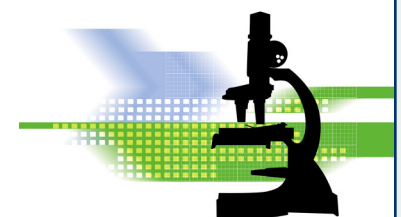
Keyword: Leadership

Call number: HD57.7 D55 2014

Elaine Chin, F. F. (2014). *The moderating effect of leadership behaviour and teamwork relationship on effective retention management in Alstom*. (MBA Thesis), Multimedia University (MMU), Malaysia.

Keyword: Employee retention

Call number: HF5549.5.R58 C45 2014



G. Ramana Murthy. (2012). *Design of low-power multiplexer-based adders for digital infinite impulse response filter*. (Ph.D Thesis), Multimedia University (MMU), Malaysia.

Keyword: Integrated circuits—Very large scale integration

Call number: TK7874.75 G73 2012

Goh, M. L. (2014). *Macroeconomic determinants of exchange rates: An ASEAN perspective*. (MBA Thesis), Multimedia University (MMU), Malaysia.

Keyword: Macroeconomics

Call number: HB172.5 G64 2014

Joseph Sheela, F. (2013). *Viscous dissipative flow between parallel plates*. (Ph.D Thesis), Multimedia University (MMU), Malaysia.

Keyword: Viscous flow (Fluid mechanics)

Call number: TA357.5.V56 J67 2013

Leong, Y. W. (2014). *Impact of psychological factors on investment decision in the Malaysian stock market* (MBA Thesis), Multimedia University (MMU), Malaysia.

Keyword: Decision making

Call number: HD30.23 L46 2014

Lew, S. L. (2012). *Relationship between information infrastructure capability and organisational competitive advantage: An empirical study on MSC Malaysia companies*. (Ph.D Thesis), Multimedia University (MMU), Malaysia.

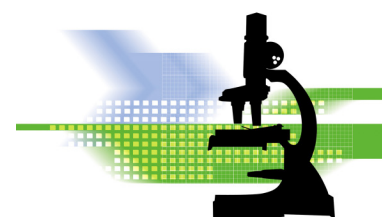
Keyword: Knowledge management

Call number: HD30.2 L49 2012

Lim, G. C. (2012). *DMAIC approach for fold reduction in manufacturing of optical lens*. (Master Thesis), Multimedia University (MMU), Malaysia.

Keyword: Six sigma (Quality control standard)

Call number: TS156.17.S59 L56 2012



Theses Receiving Report 2014 as at 8 September 2014

Lim, K. H. (2014). *Factors affecting abnormal trades in Malaysian stock market.* (MBA Thesis), Multimedia University (MMU), Malaysia.

Keyword: Stock exchanges--Insider trading in securities

Call number: HG4551 L56 2014

Mohamed Aslam Khan Mohamed Afzal Khan. (2014). *Signalling role of underwriters and auditors on Initial Public Offerings' (IPOs) initial returns.* (MBA Thesis), Multimedia University (MMU), Malaysia.

Keyword: Going public (Securities)

Call number: HG4028.S7 M64 2014

Mohammad Fairuz bin Ahmad Zulaini. (2014). *Initial Public Offerings (IPOs) initial returns: Some evidence from investors' protection legal origin and corruption level.* (MBA Thesis), Multimedia University (MMU), Malaysia.

Keyword: Going public (Securities)

Call number: HG4028.S7 M64 2014

Pang, Y. H. (2012). *Graph embedding techniques in face verification.* (Ph.D Thesis), Multimedia University (MMU), Malaysia.

Keyword: Human face recognition (Computer science)

Call number: TA1650 P36 2012

Ramdan Razali. (2012). *V/I control method and its ANN implementation for maximizing attainable efficiency of induction motor.* (Ph.D Thesis), Multimedia University (MMU), Malaysia.

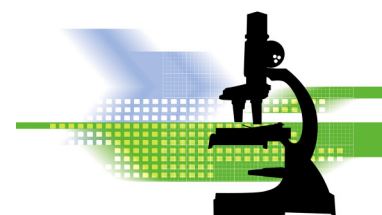
Keyword: Electric motors, Induction

Call number: TK2785 R36 2012

Reaz Ahmed. (2014). *Determinants of the ethical behaviours of managers in the Ready-Made Garment (RMG) industry of Bangladesh.* (MBA Thesis), Multimedia University (MMU), Malaysia.

Keyword: Work ethic

Call number: HD4905 R43 2014



Shadi Mehdizadeh Momen. (2014). *Transformational leadership, organisation learning and relationship orientation in logistic companies*. (MBA Thesis), Multimedia University (MMU), Malaysia.

Keyword: Organizational behavior

Call number: HD58.7 S53 2014

Tan, L. H. (2014). *Factors affecting individual's stock investment decision*. (MBA Thesis), Multimedia University (MMU), Malaysia.

Keyword: Decision making

Call number: HD30.23 T36 2014

Tan, T. L. (2012). *Contrast enhancement of computed tomography brain images for Ischaemic stroke detection*. (Master Thesis), Multimedia University (MMU), Malaysia.

Keyword: Tomography

Call number: RC78.7.T6 T36 2012

Tan, T. M. (2012). *An empirical study on brand equity in Malaysian fast food industry*. (Master Thesis), Multimedia University (MMU), Malaysia.

Keyword: Consumers' preferences--Malaysia

Call number: HF5415.32.M35 T36 2012

Tan, W. Q. (2013). *Design and development of an integrated IMU-GPS motion sensing system for UAVSAR*. (Master Thesis), Multimedia University (MMU), Malaysia.

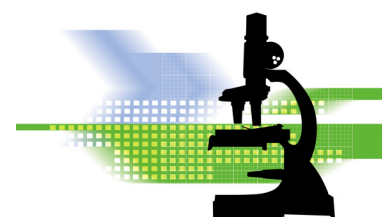
Keyword: Motion detectors (Electronics)

Call number: TK7882.M68 T36 2013

Thangavel Bhuvaneshwari. (2012). *Binary Decision Diagram (BDD) based new methodologies for performance analysis of Pass Transistor Logic (PTL) synthesis and other applications*. (Ph.D Thesis), Multimedia University (MMU), Malaysia.

Keyword: Integrated circuits—Very large scale integration

Call number: TK7874.75 T43 2012



Theses Receiving Report 2014 as at 8 September 2014

Yee, C. N. (2011). *Profitability and productivity of commercial banks in Malaysia*. (Master Thesis), Multimedia University (MMU), Malaysia.

Keyword: Banks and banking--Malaysia

Call number: HG3300.6.A6 Y44 2011

Zirwatul Adilah Aziz. (2012). *Molecular characterisation of multi-drug resistant isolates of Mycobacterium Tuberculosis in Malaysia*. (Master Thesis), Multimedia University (MMU), Malaysia.

Keyword: Nanotechnology

Call number: T174.7 Z57 2012



Top 10 MMU's Researcher in SCOPUS



Dr. Thoguluva Raghavan Vijayaram

- Pen Name: Raghavan, Vijayaram Thoguluva; Raghavan, V.
- Faculty of Engineering and Technology (FET)
- h Index: 8
- Subject Area: Engineering, Computer Science
- Total Documents: 638



Prof. Chikkannan Eswaran

- Pen Name: Eswaran, Chikkannan; Eswaran C.
- Faculty of Computing and Informatics (FCI), Cyberjaya Campus
- h Index: 11
- Subject Area: Computer Science, Engineering
- Total Documents: 159



Prof. Tso Chih Ping

- Pen Name: Tso, Chihping; Tso, Chih Ping; Tso, Chih-Ping; Tso, C. P.
- Faculty of Engineering and Technology (FET), Malacca Campus
- h Index: 18
- Subject Area: Engineering, Chemical Engineering
- Total Documents: 154



Prof. Dr. Raphael Phan Chung Wei

- Pen Name: Phan, Raphael C. W.; Phan, Raphael C.-W.; Phan, Raphael C W; Phan, Raphael
- Faculty of Engineering (FOE), Cyberjaya Campus
- h Index: 11
- Subject Area: Computer Science, Mathematics
- Total Documents: 136



Prof. Dr. Hairul Azhar bin Abdul Rashid

- Pen Name: Abdul-Rashid, H. A.; Abdul-Rashid, Hairul A.; Abdul Rashid; Abdul-Rashid
- Faculty of Engineering (FOE), Cyberjaya Campus
- h Index: 10
- Subject Area: Engineering, Computer Science
- Total Documents: 108



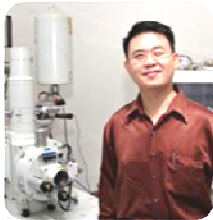
Prof. Dr. Tou Teck Yong

- Pen Name: Tou Teckyong; Tou, Teck-Yong; Tou, Teck Yong
- Faculty of Engineering (FOE), Cyberjaya Campus
- h Index: 11
- Subject Area: Engineering, Computer Science
- Total Documents: 101



Prof. Machavaram Venkata Calapathy Rao

- Pen Name: Rao, Machavaram Venkata Calapathy; Rao, M. V C; Rao, Machavaram Venkata C.
- Faculty of Engineering and Technology (FET), Malacca Campus
- h Index: 16
- Subject Area: Computer Science, Engineering
- Total Documents: 82



Dr. Ir. Sim Kok Swee

- Pen Name: Sim, Kokswhee; Sim, Kok-Swee; Sim, Kok Swee; Sim K. S.
- Faculty of Engineering and Technology (FET), Malacca Campus
- h Index: 8
- Subject Area: Computer Science, Engineering
- Total Documents: 78



Prof. Dato' Dr. Muhamad Rasat Bin Muhamad

- Pen Name: Muhamad, Rasat Muhamad; Muhamad, Muhamad. Rasat.; Muhamad, Muhamad Rasat; Muhamad, M. R.
- Chancellery Office @ President's Office (PRES)
- h Index: 12
- Subject Area: Engineering
- Total Documents: 73



Assoc. Prof. Dr. Zulfadzli Bin Yusoff

- Pen Name: Yusoff, Zulfadzli; Yusoff, Z.
- Faculty of Engineering (FOE), Cyberjaya Campus
- h Index: 14
- Subject Area: Engineering
- Total Documents: 72

Serials/Database Highlights

Online Databases & Online Journal Packages (Science & Technology)

| TITLE | SUBJECT COVERAGE | TYPE OF MATERIAL CONTENT | FORMAT | USAGE STATISTIC 2014 | | | |
|---|---------------------------------|--|---|--|--|---|--|
| | | | |  Fulltext |  Record Request |  Session |  Search |
| ACM Digital Library * (Association for Computing Machinery) | Computer, Engineering etc | Journal, Magazine, Transaction; Conference, proceeding; Newsletter | Full text/Abstract/Citation (pdf/html) | 3,658 | NA | 2,998 | 3040 |
| IEEEXplore ** (IEEE) | Engineering | Journal, Magazine, Transaction; Conference, proceeding, seminar digest; Standard | Full text/Abstract/Citation (pdf/html) | 48,764 | 9,446 | 21,215 | 31,084 |
| Lecture Note in Computer Science (LNCS) (Springer) | Computer Science | Book series; Chapter of book; proceeding papers | Full text/Abstract/Citation (pdf/html) | 23,759 | NA | NA | NA |
| EBSCO Medical Package (EBSCO) | Medical, Life Science | Journal, Magazine; | Full text/Abstract/Citation (pdf/html); Image/video | 2,147 | 1,726 | 46,443 | 95,085 |
| InfoSci Online Journal Package (IGI Global) | Information Science | Journal | Full text (pdf/html) | 259 | NA | NA | NA |
| World Scientific Online Journal Package** (World Scientific) | Computer Science | Journal | Full text (pdf/html) | 580 | NA | NA | NA |
| ASME Online Journal Package (American Society of Mechanical Engineers) | Mechanical Engineering | Journal | Full text (pdf/html) | 274 | NA | NA | NA |
| SIAM Online Journal Package (Society for Industrial and Applied Mathematics) | Mathematics | Journal | Full text (pdf/html) | 5,237 | NA | NA | NA |
| SPIE Digital Library (International Society for Optics and Photonics) | Engineering, Optics & Photonics | Journal; Conference Proceeding | Full text/Abstract/Citation (pdf/html) | 1,145 | NA | NA | 315 |

*Usage statistic provided only for 5 months from January 2014 to May 2014

** Usage statistic for full text is not available since there is subscription issue which was resolve in September.







Association for Computing Machinery



Serials/Database Highlights

Online Databases & Online Journal Packages (Social Science, Art & Humanities)

| TITLE | SUBJECT COVERAGE | TYPE OF MATERIAL CONTENT | FORMAT | USAGE STATISTIC 2014 | | | |
|--|---------------------------------------|--|---|--|--|---|--|
| | | | |  Fulltext |  Record Request |  Session |  Search |
| Emerald Management * (Emerald) | Management | Journal; Chapter of book, Book review | Full text/Abstract/Citation (pdf/html) | 19,168 | 2,649 | 16,035 | 9,338 |
| AACE Digital Library ** (Association for the Advancement of Computing in Education) | Education, Multimedia etc. | Journal; Conference, proceeding, talks; e-book | Full text/Abstract/Citation (pdf/html); Audio | N/A | 253 | 165 | 79 |
| MIT Press Online Journal Package (MIT Press) | Arts & Humanities, Design, Multimedia | Journal | Full text (pdf/html) | 46 | NA | NA | NA |




*Usage statistic provided only for 5 months from January 2014 to May 2014

** Usage statistic for full text is not available since there is subscription issue which was resolve in September.



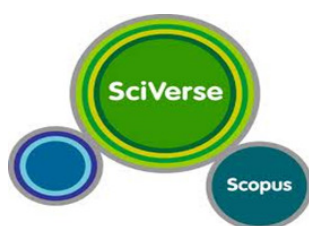
Serials/Database Highlights

Online Databases & Online Journal Packages (Multidiscipline)

| TITLE | SUBJECT COVERAGE | TYPE OF MATERIAL CONTENT | FORMAT | USAGE STATISTIC 2014 | | | |
|--|----------------------------------|--|--|--|--|---|--|
| | | | |  Fulltext |  Record Request |  Session |  Search |
| ProQuest Digital Dissertation Fulltext (PQDT) (ProQuest) | Multidiscipline | Theses & Dissertation | Full text/Abstract/Citation (pdf/html) | 3,765 | 843 | NA | 53,096 |
| SpringerLINK (Springer) | Multidiscipline | Journal, Protocols, Books, Book series | Full text/Abstract/Citation (pdf/html) | 9,133 | NA | NA | NA |
| ScienceDirect (with freedom collection) (Elsevier) | Multidiscipline | Journal, Book, Book review, conference, proceeding | Full text/Abstract/Citation (pdf/html) | 86,723 | NA | 23,313 | 28,191 |
| EBSCO Premier Packages: Business Source Complete & Academic Search Premier (EBSCO) | Multidiscipline | Journal, Magazine; Newspaper; Report; Case report; Book review | Full text/Abstract/Citation (pdf/html); Image/video | 27,222 | 20,094 | 77,229 | 167,643 |
| ProQuest Central (ProQuest) | Multidiscipline | Journal, Magazine; Newspaper; Report; Case report; Book review | Full text/Abstract/Citation (pdf/html) | 22,885 | 2,267 | NA | 18,551 |
| Scopus (Elsevier) | Multidiscipline (Research tools) | Journal, book, chapter of book, proceeding paper, review, meeting, Indexing/Bibliographic record | Abstract/Citation/Indexing/Bibliographic record (pdf/html) | NA | 6,362 | 1,869 | 45,420 |

*Usage statistic provided only for 5 months from January 2014 to May 2014

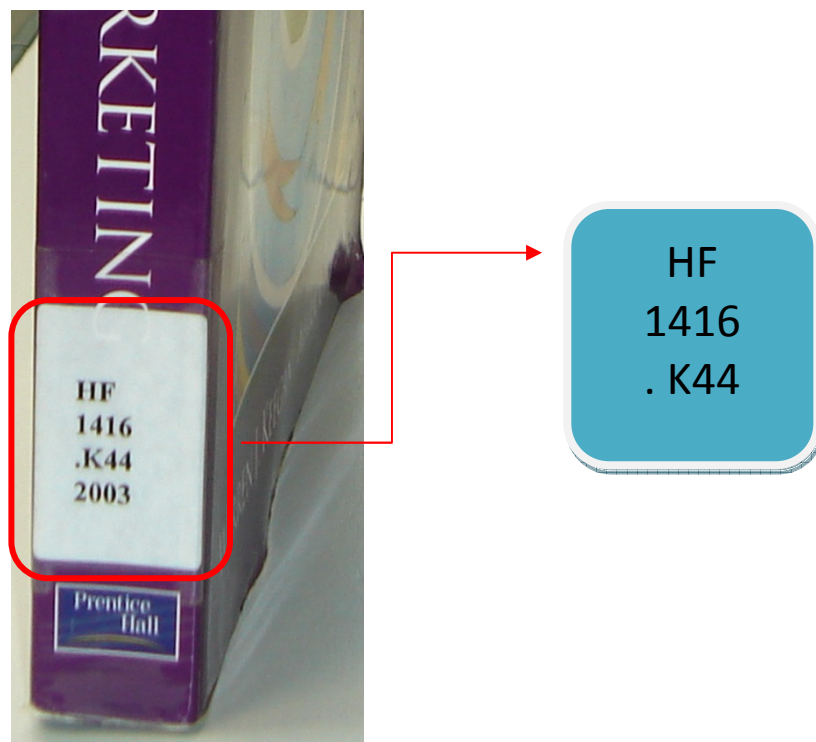
** Usage statistic for full text is not available since there is subscription issue which was resolve in September.



A Library HOW - TO: Read a Call Number on Book at the Shelves

INTRODUCTION

In this issue, library will give simple tutorial on How to read call number on book at the shelves.



What is Call Number?

Call number is a mark, especially a combination between alphabet and number, on the spine of a library book/collections, or listed in the library's catalog, indicating the book's location in the library. Library collections for example Books are filed on the shelves in call number order so that books on similar subjects are shelved together. To find a book on the shelf, you must be able to decode the call number.

At the Siti Hasmah Digital Library (SHDL), we use the Library of Congress (LC) classification system. LC call numbers are made up of letters and numbers and look something like this:

HF1416.K44 2003

A Library HOW - TO: Read a Call Number on Book at the Shelves

Read the call number from left to right. Call numbers are arranged alphabetically on the shelves.

An example of call numbers in order on a shelf:

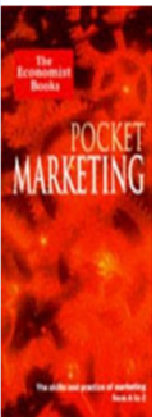
| | | | | | | |
|--------------------------------------|----------------------------|--------------------------------------|-----------------------------|-------------------------------------|---------------------------------------|----------------------------|
| HF 5386 K536 2001 | HF 5386 K77 | HF 5386 K776 1987 | HF 5386 R155 | HF 5386 S33 2001 | HF 5386 S4127 1998 | HF 5386 S54 |
|--------------------------------------|----------------------------|--------------------------------------|-----------------------------|-------------------------------------|---------------------------------------|----------------------------|

An example of call number in elite sOPAC (Library Catalog):

Search [Advanced Search](#)

Pocket marketing /

Record 27 of 1,941 < Previous Next > [Return to search](#)



Publisher Profile Books Ltd,
Subject Marketing
MGT
Year 1997
Notes Includes appendices

[Add to My List](#)

Total Ratings: 0

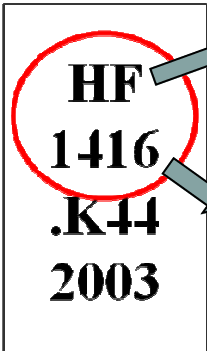
Copies
Reviews
Details
Additional Information

| Location | Shelf Location | Call Number | Barcode | Item Class | Status | Public Note |
|--------------------------|----------------|---------------------|---------|------------|-----------|-------------|
| <input type="checkbox"/> | MMU CYBER | ref HF5415.P63 1997 | 0045516 | REFERENCE | Available | |

Add to My List
Select All
Clear All

Version s96
© 2008-2011 VTLs

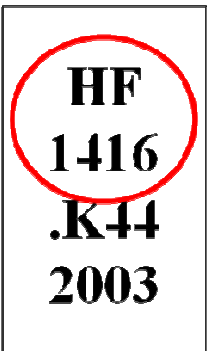
Book's Call Number in detail:



HF is a Library of Congress subject code. Books are shelved alphabetically by these letters. "H" stands for Social Sciences, and "HF" is for Commerce.

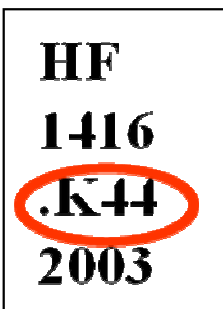
The number **1416** is a further subdivision of the "**HF**". Books with the numbers "**14**", "**141**", will all be shelved to the left, before this book, in this order. Books with higher number such as "1416.1" and "1500" will be shelved to the right, after this book also in this order.

HF14 HF141 HF1416 HF1416.1 HF1500



Occasionally, this whole number will include a decimal fraction, as in the previous slide "**HF1416**". If the book you are looking for has this kind of number, it will be shelved after the number without the decimal fraction, but before the next whole number, like below:

HF1416 HF1416.1 HF1417



The next letter/number combination is called "Cutter Number" and is based upon the author's name, or the title of the book, or another designation established by the book's cataloger. This book has only one cutter number:

.K44



The book will be arranged alphabetically by the "HF"

HA248.L

HF1416.K

HG248.N

And then by the number that follows the "K". Note that even if there is no decimal point, this is a decimal number:

HF1416.K43

HF1416.K44

HF1416.K45

Because it is a decimal number, it should be read as "K point four four". Note also that because it is a decimal number, **44** is larger than **43**, and that **K43** goes before **K44**, while **K45** comes after **K44**.

Other numbers that usually follow the Cutter Number are the Year of Publication (for this book it would be 2003), which are arranged in their respective numerical order, and Copy Number (C.2) if any, which are also arranged numerically. The periods in "C.2" is abbreviation points, not decimal points.



Mendeley is free software which combines desktop application and web importer. It creates a library on your computer desktop or on the web. It organizes all your readings and films that you have watched in a format that is easy to use, whilst at the same time assisting you in generating citations and Reference

Lists at a click of a mouse. One of the best features is called Reference Manager. It helps user to generate citations and bibliographies in Microsoft Word, LibreOffice and LaTeX. Mendeley has the ability to open PDF files and user are able to highlights and put on sticky notes for future purposes.

By using Mendeley, you have the ability to import and organize PDF files from your computer. For EndNote, Papers or Zotero, existing users do not have to worry as you can easily import all those data to Mendeley, as simple as abc. Having trouble to collaborate? Mendeley has the solutions. It helps user to connect with colleagues and securely share papers, notes and annotation in a few clicks away.

What if your computer suddenly not working and loses all the data? Well, Mendeley users should not be worry because Mendeley has backup, sync and mobile features. Just install Mendeley on a new machine and you will get back all your files. It also supports iOS users; iPhone and iPad by using Mobile Mendeley. Last but not least, it has special features called Network and Discover which offers a service to discover papers, people and public group, in other words it also has a role as a medium for social media. The best of all is that it is totally free.

Article:

Database Training 2014

| Month | Date/Day | Date/Day | Faculty | Database | Time |
|-------|--------------------------------|---------------------------------|--------------------|--|--------------------|
| | (Cyber) | (Melaka) | | | |
| Feb | 27 February 2014 (Thursday) | 26 February 2014 (Wednesday) | ALL | Science Direct/Scopus | 10.00 am - 1.00 pm |
| | 21 February 2014 (Thursday) | 20 February 2014 (Wednesday) | FOM/ FBL | ISI Emerging Market | 10.00 am - 1.00 pm |
| April | 10 April 2014 (Thursday) | 9 April 2014 (Wednesday) | FBL/ FOM MBA | Emerald Intelligent Full-text | 10.00 am - 1.00 pm |
| | N/A | 10 April 2014 (Thursday) | LAW | Westlaw | 2.30 pm - 4.00 pm |
| | 17 April 2014 (Thursday) | 16 April 2014 (Wednesday) | FOE, FET | IEEE/Knovel | 10.00 am - 1.00 pm |
| May | N/A | 8 May 2014 (Tuesday) | LAW | CLJ- Current Law Journal | 2.30 pm - 4.00 pm |
| | 22 May 2014 (Thursday) | 21 May 2014 (Wednesday) | ALL | Ebsco *ASP,BSP, PsyINFO, Medline, eJournal A-Z | 10.00 am - 1.00 pm |
| | 29 May 2014 (Thursday) | 28 May 2014 (Wednesday) | FOM, FBL | Datastream | 10.00 am - 1.00 pm |
| June | N/A | 3 June 2014 (Tuesday) | LAW | Lexis Malaysia | 2.30 pm - 4.00 pm |
| | N/A | 5 June 2014 (Thursday) | LAW | LawNet | 2.30 pm - 4.00 pm |
| | 19 June 2014 (Thursday) | 18 June 2014 (Wednesday) | FOM/ FBL | Marketline | 10.00 am - 1.00 pm |
| July | 3 July 2014 (Thursday) | 2 July 2014 (Wednesday) | FOM/ FBL | BLIS- Bernama Library & Infolink Services | 10.00 am - 1.00 pm |
| Aug | 14 August 2014 (Thursday) | 13 August 2014 (Wednesday) | ALL | Access Dunia Springer LINK (ALL) World Scientific Online Journals (FOE/ FET/FIT/FIST) SIAM(FOE/FET) ACM (FOE/FET/FIST/FIT/FCM), ASME (FET), IGI (FBL/FOM), CSA & MIT Press (FCM), IGI | 10.00 am - 4.00 pm |
| | 21 August 2014 (Thursday) | 20 August 2014 (Wednesday) | FOM/ FBL | ISI Emerging Market | 10.00 am - 1.00 pm |
| | 28 August 2014 (Thursday) | 27 August 2014 (Wednesday) | FOM, FBL | GMID | 10.00 am - 1.00 pm |
| Sept | 4 Sept 2014 (Thursday) | 3 Sept 2014 (Wednesday) | ALL | Mendeley | 10.00 am - 1.00 pm |
| Oct | N/A | 8 Oct 2014 (Wednesday) | ALL | *Taylor Authorship Workshop | 10.00 am - 1.00 pm |
| Nov | 13 Nov 2014 (Thursday) | 12 Nov 2014 (Wednesday) | ALL | ProQuest | 10.00 am - 1.00 pm |

*Any changes for the proposed date and time will be notified

*Library will circulate the training details via email, library portal, notice, posters and etc.

Library FAQ



Where can I get updates and latest notice/information on the library opening hours and such?

New updates are available through the "Latest News" at the library portal. It lists all new updates such the opening hours during trimester break as well as library activities.



How can I become a library member?

Library membership form is available at the library. You need to fill up the membership form to borrow books and use our services and facilities. Kindly contact the customer service department for further information on library membership.



How can I find a book in the library?

Users can find books in our collection by using the LIBRARY sOPAC (Elite sOPAC). Key in the title/topic regarding to the books and click "Submit Search". Copy the information available under the "holding information" for your reference.



How do I hold books?

Hold requests can be made by informing the library staffs via phone call or physically come to the library counter.



How about the overdue fines when I late return borrowed books?

Late return fine charges will be calculated as per below tabulation on the first 30 days after the item is overdue. However on the 31st day, the fine charges will automatically described as RM 50.00 and the subsequent days of late return after day 31, another RM 0.50/day will be charged respectively for all items except reference which will be charged RM1.00/day.



Can I return borrowed books to any MMU library?

Yes, you can return your borrowed books to any MMU libraries. Kindly inform the Library staff regarding to the status of the borrowed books.



What is Red-spot Collections? How many hours can I loan them?

Red-spot collections comprises from textbooks and reference books. Only one item is allowed at a time to be loaned for a period of 2 hours, which is renewable if demand permits. Overnight loan is permitted from 9.00 p.m. onwards. Overnight loan must be returned before 10.00 a.m. the next day

DISCOVER @ SHDL

Siti Hasmah Digital Library (Cyberjaya)

Jalan Multimedia,
63100 Cyberjaya,
Selangor, Malaysia.

Tel:603 83125852
Fax:603 83125866

Siti Hasmah Digital Library (Melaka)

Jalan Air Keroh Lama,
75450 Bukit Beruang,
Melaka, Malaysia.

Tel:606 2523493
Fax:606 2322764

The MMU Library was established in 1996 when Universiti Telekom opened its first campus in Bukit Beruang Ayer Keroh, Melaka, Malaysia. The library which is situated at the Melaka campus was named University Telekom Library (UNITELE Library) and could only accommodate about 600 students during that time. The Multimedia University (MMU) Library was then moved to a new building in May 2000. In 1999, another MMU library was set up in Cyberjaya, Selangor, Malaysia and was given the name Siti Hasmah Digital Library. This library was launched on 24th July 2000 with the intention of it being first Academic University Digital Library for the nation.

QUICK FACTS@SHDL

SERVICES

- User Education Program
- Online Form
- E-Reference
- Inter/Intra Library Loan
- Document Delivery Services
- Instant Messenger Interaction
- Online Book Renewal
- Loan Transaction

COLLECTIONS

- Books
- E-Books
- Theses
- Past Year Exam Papers
- Journal/Magazines
- Online Databases
- Av Materials
- Final Year Project

FACILITIES

- Database Centre
- sOPAC Terminal
- Media Room (Single/Group viewing)
- Wi-Fi
- Lockers
- Group Discussion Room (Research Library)
- Photocopy Machines
- 24-Hour Learning Point
- Post Graduate Research Point (Melaka)